

**ELAN-MESH**  
**FULL DUPLEX 3.65GHz**  
**FREEDOM NODE**

ELAN Technologies Inc.  
 14627 Edison Drive  
 New Lenox, IL 60451



815.463.8105 x113

ElanTechnologies.net

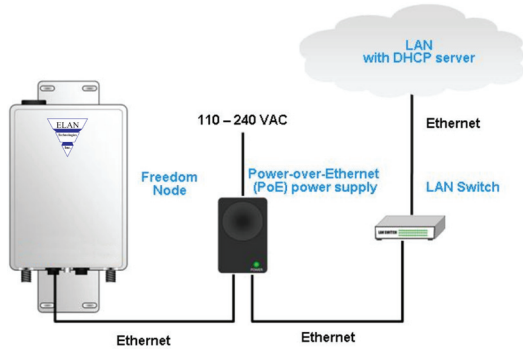
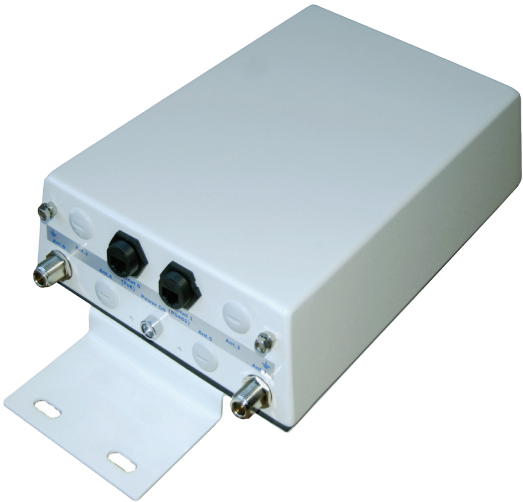
ELAN Technologies is a multifaceted design engineering and manufacturing company providing state-of-the-art technology solutions for municipal, government, and investor owned utilities.

The ELAN philosophy of one industrial wireless network leverages available infrastructure for industrial communication with remote assets. ELAN provides industrial grade wireless technologies including WiMAX 802.16d, 802.16e, ELAN-MESH 802.11 (a,b,g,n), point to point microwave backhaul and narrow band industrial wireless for distribution automation and AMI.

ELAN is a participating member company of SGIP for wireless communications. ELAN is a valued contributor for the advancement of Smart Grid interoperability, and specifically testing and certification for all ELAN Smart Grid systems.



Innovative solutions to the most difficult monitoring and control requirements



**Description**

The ELAN MESH™ 3.65GHz Freedom Node with mesh connect option is currently the best affordable layer-2 solution on the market today.

The ELAN MESH™ Freedom Node enables automatic time-to-market coverage for licensed seamless working wireless networks, leveraging the advantages; such as true mobility, high throughput, and the ubiquity of client devices. With the introduction of a self installable wireless Freedom Node, a wireless network can be deployed in a matter of hours without the need for per node wiring or installation specialists.

**Key Features**

- Available with 1-4 radio-cards in a mix of access and backhaul
- 2x 10/100 Base-T Ethernet port, outdoor RJ-45
- Power-over-Ethernet, 802.3af type 1, type 2 and legacy Cisco PoE
- Up to 25dBm output power, controllable in steps of 1dB
- Remotely configurable and software upgradeable
- 64, 128-bit WEP, WPA - Enterprise/Personal
- WPA2 - Enterprise/Personal
- MAC Address Access Control List
- Complies with EMI/RFI Regulations
- CE, WEEE and RoHS Compliant
- Powder coated off-white, aluminum enclosure

<b>Specifications</b>	
LAN Interface	2x 10/100Mbps Ethernet, PoE+ capable 15Watt max.
Wireless Interface	1x 3.65GHz, 25dBm, power control in steps of 1dB Channel Bandwidths: 5, 10, 20 and 40MHz Unlicensed Wireless with Contention Protocol
Modes	L3 Routing (NAT), L2 Bridging including bridging over mesh links
Device Management	SSH command line, HTTP(S), XML interface, SNMP v1 or v2
Advanced Features	DHCP server, DHCP client, Port Forwarding, Bandwidth control
VPN client	PPP over SSH
<b>Environmental</b>	
Operating Temperature	-40° to +85°C with no derating
Storage Temperature	-40° to +90°C
Relative Humidity	5% to 95% non-condensing
Altitude	0-10,000 feet
Cooling	Convectonal - non vented case